

# 2025 WIAA Sectional Track Meet

Friday, May 30th, 2025  
Hosted by Marinette High School



<b><u>Location</u></b>	<b>Marinette High School</b> <b>2135 Pierce Ave.</b> <b>Marinette, WI 54143</b>
<b><u>Teams:</u></b>	The first 4 finishers in each event from the Chilton, Kiel, Little Chute & Waupaca Regionals
<b><u>Meet Contacts</u></b>	Dean Furton, Meet Manager, Marinette Activities Director, <a href="mailto:dfurton@marinette.k12.wi.us">dfurton@marinette.k12.wi.us</a> Jessica Konyon, Marinette Head Track Coach, <a href="mailto:jkonyon@marinette.k12.wi.us">jkonyon@marinette.k12.wi.us</a>
<b><u>Schedule</u></b>	<b>1:30pm</b> Teams can arrive for camp set-up <b>2:00pm</b> Gates open for spectators <b>2:15pm</b> Field Events open for warm-ups (if a coach is with their athletes they can warm up earlier. Workers will arrive about 2:15pm) We will have general warm-ups for field events until 2:35pm and then at 2:35pm warm-ups for the first event (gender specific) will begin. <b>2:15pm</b> Coaches Meeting – this meeting will take place in the High School gym <b>2:55pm</b> National Anthem <b>3:00pm</b> Field Events begin <b>3:40pm</b> All on-track warm-ups will come to an end <b>3:45pm</b> Running Events begin
<b><u>Track Information</u></b>	We have an 8 lane track. High jump is located in the East end-zone, pole vault is located in the West end-zone. Long jump and triple jump are inside the track, parallel to the South straightaway. Shot put and discus are located to southwest of (diagonally behind) the visiting bleachers.
<b><u>Officials</u></b>	Meet Referee: Bruce Parkovich, Starters: Dan Bouche & Paul Mleziva, Field Event Referee: Roger Kane
<b><u>Surface</u></b>	Track and jumping surfaces are rubberized – 1/4” spikes are allowed. Throwing surfaces are concrete. NO TAPE, CHALK ONLY - will be provided
<b><u>Athletic Trainer:</u></b>	Mike Shampo, LAT, Bellin Health - will be located near the finish line
<b><u>Games Committee:</u></b>	The games committee will consist of; Meet Manager - Dean Furton Starter - Dan Bouche Starter - Paul Mleziva Coach - Amber Yerkey, New London Coach - Mike Balliett, Wittenberg-Birnamwood Alternate Coach - John Gard, Notre Dame Alternate Coach - Glen Smith, Plymouth

### **Jury of Appeals**

Each tournament manager must appoint a Jury of Appeals consisting of two contracted WIAA starters, meet manager, and a coach of a boy's team and a coach of girl's team not from the same school or host school. Adjustments will be necessary if only two WIAA officials are assigned to a regional. Members of the committee must stay on site until 30 minutes after results are posted.

- (a) The Meet Referee cannot be part of this committee
- (b) If anyone on the committee has his/her school involved with an appeal they must withdraw from that particular review
- (c) Alternate girls and boys coaches should be appointed in the event a coach must withdraw. (see b)
- (d) The membership of this committee must be published and sent to all involved schools prior to the meet
- (e) This committee serves as the final board of appeals. Their responsibilities include:
  - 1) Hearing and ruling on appeals of official's decisions, including the decision to re-run (or not re-run), who is eligible, and when it will occur.
  - 2) This committee, however, has no authority to set aside, modify, or change defined WIAA tournament qualifying procedures or National Federation Track & Field rules.
- (f) The WIAA does not have authority to change a Meet Referee or Jury of Appeals decision.
- (g) The Meet Referee must assemble this committee prior to the start of the meet to review their responsibilities.
- (h) Appeals may be verbal (not required to be written, Rule 3-5-2).

### **Tents**

All team camps must be set-up north of the home bleachers in the grass inside the fence. There is also some space in the grass on East end of the facility near the bathrooms/visiting bleacher area inside the fence. Please respect everyone's space when selecting a spot and setting up your space.

### **Site Arrival**

There are two entrances to the school parking lot. **We are asking all buses and spectators to enter from Cleveland Ave. into the school parking lot. (See attached map.)**

***We do have school until 3:15pm, however, all of our students and staff will be parked in the Community Rec. Center next to our school,*** so the parking lot will only be for spectator parking.

Due to staff and student foot traffic at the end of our school day, we are asking everyone's help in abiding by these directions to ensure safety of pedestrians and minimize traffic congestion on Pierce Ave. in front of our school.

### **Buses:**

Bus parking will be at the Community Rec Center right next to (to the South of) our High School. Buses will be allowed to enter the school parking lot to drop off coaches and athletes by the gate entrance and then park in the South portion of the Community Rec Center parking lot (near the water tower)

### **Spectators/Admissions**

Gates will open at 2:00pm for spectators. Admissions will be \$7 for all spectators. Spectators will be allowed to park in the high school parking lot. The Marinette Community Rec Center is also next to our school. There will be some overflow parking available for spectators there as well.

**Entries** Will be inputted from Regionals by PTTiming

Scratches are allowed the day of the meet, but no replacements are allowed except as indicated in the WIAA Track & Field Rules & Regulations - Tournament Procedures.

(1) An individual may scratch from part of the meet without having to scratch from the entire meet.

(2) An individual who is already entered in an event(s) cannot scratch from one event to replace a student in another event.

**Relays**

- (1) School must list individual names and a seedtime on the Tournament Entry Form.
- (2) A maximum of six students may be listed. The same listed individuals must be retained through the entire tournament series (regional/sections/state).
- (3) Additional relay substitution names, beyond the original six entered, may be added for injury, illness, or discipline. In order to add additional names, six athletes must have been listed on the original entry form. Additional substitutes will only be added with signed medical excuse or disciplinary letter from the school's athletic director, principal or superintendent/president. The substitution must be approved by the WIAA office. This new substitute may not exceed four events from his/her original entry for regionals.
- (4) Being listed as a relay team member counts as one of the four allowed events whether or not the student participates.
- (5) Coaches have until the Clerk of Course checks in the teams to designate which listed runners will compete.

**Shot put & Discus** Weigh-in and inspection will be done in the purple shed at the throws area, 1:45 - 2:30pm.

**Exchange Zones** We plan to assign a few teams to relay exchanges once regionals have been run. We hope to select schools who do not have a team in the relay to help as relay judges. These assignments will be included in an email with final meet instructions.

**Awards** **Team:** 1st Place Girls, 1st Place Boys & 1st Place Wheelchair  
**Individual Events & Relays:** Medals for the top 4 (state qualifiers)  
Awards will be handed out at the middle of the infield on a podium for the top 4 finishers.

**Format for Competition**

Field Events: Trials of 3 jumps/throws in the long jump, triple jump, shot put & discus. Using performances from regionals, contestants having the poorest performances will be first and those having the best performances will be last in order. The top 9 competitors from trials will have 3 additional attempts in finals which will be run in reverse order. The best mark from trials and finals will be recorded in the results.

Running Events: 100m hurdles, 110m hurdles and 100m dash will have trials and finals. Eight competitors will compete in finals, which will be made up of heat winners and next best times to fill the field. Meet event order is listed below. Please note that we will have wheelchair events at this sectional.

### **Restricted Area**

The western  $\frac{2}{3}$  of the football field is a restricted area. This is especially the case behind the start/finish line. Unless an athlete is meeting with the trainer, they should not be behind the start/finish line. Only competitors in the jumping/vaulting events should be in those respective areas. Everyone else must be outside the track. Competing athletes should be inside the fence/lagged areas of field events. Again, NO ONE is allowed behind the timing area inside the track. We do not want to disqualify competing athletes because someone is in a restricted area.

### **Restricted/Competing Areas**

Only athletes and coaches will be allowed behind the flagged areas. We will be giving coaches who are registered on the WIAA website as a school coach a wristband. If you want a coach to have a wrist band have them listed on the WIAA website by noon on Wednesday, May 28th. No one without a number or wrist band will be allowed in the field event areas. We are also asking coaches' help in keeping non-compete athletes out of the flagged areas.

### **Warm-up Area**

Warm-up area for runners will be on the east  $\frac{1}{3}$  area of the infield. This area will be flagged off. NO ONE (coaches or athletes) will be allowed on the western  $\frac{2}{3}$  portion of the football field. There are two exceptions: if an athlete is seeing the trainer and if an athlete is receiving their state qualifying awards.

### **Coaches' Area**

The bottom floor of the press box will have snacks, drinks and a light meal for coaches.

### **Shirts & Apparel**

We will have sectional shirts for sale. The T-shirt booth will be located on the blacktop near the admission gate.

### **Reminders**

- Teams should not arrive before 1:30pm
- We do have school until 3:15pm, however, our school parking lot will be empty.
- Gates open at 2:00pm for spectators, the cost is \$7.00
- Busses will drop off in the main parking lot by the track and then exit and park in the South end of the Community Rec. Center.
- Coaches, please make sure your assistants, athletes and fans know the expectations for this meet.
- Clerk of Course will be located at the northeast end of the track, next to the flag poles.
- Set-up camp in the grass behind the press box or in the grass behind the bathrooms.
- Wrist band or numbers will determine access to events for athletes and coaches.
- **Please email Pole Vault verification (dated May 19) to [dfurton@marinette.k12.wi.us](mailto:dfurton@marinette.k12.wi.us) by 6:00pm the day before the meet (Thursday, May 29th).**
- Concessions will be available on site (burgers, brats, hot dogs, nachos, water, Gatorade, pop & more)
- Radio Station 101 WIXX out of Green Bay will be on site to **CRASH OUR CONCESSIONS** at some point during the event!
- Restrooms: there is a purple building by the flagpoles that has men's and women's bathrooms. There will also be port-a-potties around the facility for use.
- No one is allowed in the school unless we have a weather emergency.

# Events & Meet Order

## 3:00 pm Field Events

3 jumps/throws

Top 9 to finals

3 additional jumps/throws in finals

Shot Put—Wheelchair 1st, Girls 2nd, Boys  
3rd (3 throws, trials & finals)

Discus—Boys 1st, Girls 2nd  
(3 throws, trials & finals)

High Jump—Girls 1st, Boys 2nd

Pole Vault—Boys 1st, Girls 2nd

Triple Jump—Boys 1st, Girls 2nd  
Open Pit (3 jumps, trials & finals)

Long Jump—Girls 1st, Boys 2nd  
Open Pit (3 jumps, trials & finals)



## 3:45 pm Running Events

8 competitors to finals

1600m Wheelchair

3200m Relay

100m Dash (girls) trials

100m Dash (boys) trials

100m Hurdles (girls) trials

110m Hurdles (boys) trials

15 minute break

110m Hurdles (boys) finals

100m Hurdles (girls) finals

100m Wheelchair

100m Dash (girls) finals

100m Dash (boys) finals

(Remaining races will continue girls followed  
by boys)

1600m Run

800m Relay

400m Wheelchair

400m Dash

400m Relay

300m Hurdles

800m Run

800m Wheelchair

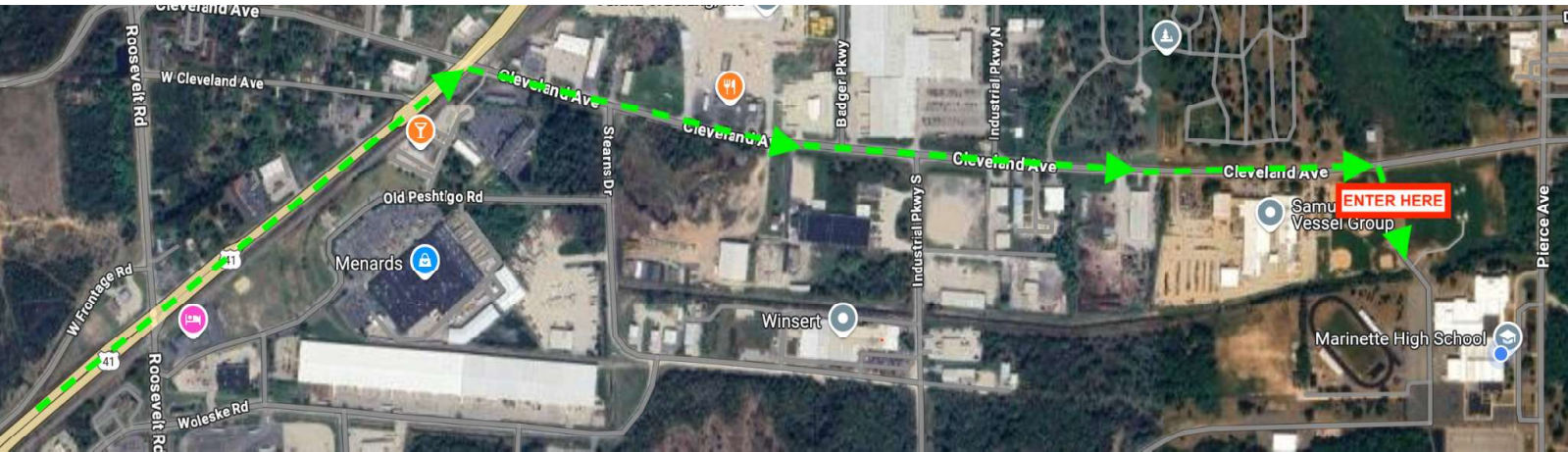
200m Dash

3200m Run

1600m Relay



**To Marinette High School from Highway 41**



**Entrance to school parking lot & bus & spectator parking**





## Marinette Track Event Locations



## **Higley Field/Track and Field Emergency Action Plan**

### **Address:**

2135 Pierce Avenue Marinette, WI 54143

### **Emergency Personnel:**

**Michael Shampo, LAT, ATC**

Athletic Trainer

Cell: 906-748-4603

Email: Michael.Shampo@bellin.org

Licensed Athletic Trainer (LAT) available at school from 2:30-5:30 (hours pending event coverage). In the event that the LAT is unavailable by phone, the coaching staff is responsible for summoning emergency care. Coaches should then contact LAT after 911 has been called.

### **EMS Access:**

Venue located access to main entrance enter from Pierce Avenue. Athletic Director, coach, and/or event staff will direct EMS crew to appropriate location from the main entrance.

### **Phone Locations and Numbers:**

EMS: Dial 9-911 (school phones); make sure you are speaking with Marinette County Dispatch

Cell Phone: 911; make sure you are speaking with Marinette County Dispatch

**SCHOOL PHONE:** 715-735-1300

### **Emergency Equipment:**

Know location of all equipment and check condition of all equipment prior to event.

-Splint kit/Crutch bag: crutches, splints, and C-collars

-Blood spill kit: biohazard bags, gloves, gauze, disinfectant spray

-Cell phone/Land line (to be tested prior to event)

-Med kit/fanny pack

-Airway Kit: CPR mask

-Permission to Treat cards

### **-AED Locations:**

There is an AED located in the ticket booth by the main entrance.

Athletic Trainer covering event may also have AED with them (located on bench or near red splint bag)

Comment: Football practice/shot put and discus are back behind the football field/track. There is a long gravel driveway to get to the area.

### **Role of Emergency Response Team:**

*Role 1: Athletic Trainer or First Responder*

-First on scene, perform primary assessment/emergency care (ex: CPR, rescue breathing) as necessary

\*If alone, activate EMS response: 9-1-1 (make sure speaking with Marinette COUNTY)

\*Report the nature and severity of the injury, what care is being administered, location and address, phone number. Remain on line until dispatcher ends call.

\*Notify LAT if condition is not life threatening

*Role 2: Athletic Trainer, athletic training student, coach, or event staff (Second Responder)*

-Accompany first responder on court and assist as needed (retrieve necessary emergency equipment)

-Activate EMS if not already done (see directions under Role 1).

*Role 3: Event coordinator, assistant coach, or teachers (Third Responder)*

-Alert parents (if not present) and event staff of emergency

-Meet EMS at gate ## unless EMS is parked by the visitor stands and direct to location of patient. Ensure gates/doors are unlocked and open.

*Role 4: Events staff, and other coaches/teachers*

-Crowd Control: keep uninjured players, fans, and others away from injury site. Help clear area for EMS.

**\* Parents, athletics staff, or assistant coach should accompany athlete to hospital if possible.**

*Roles should be assigned prior to event to individuals who are adequately trained and comfortable with that role. Everyone should be aware of specific responsibilities and review procedures on a regular basis. Questions should be referred to the Athletic Trainer.*