

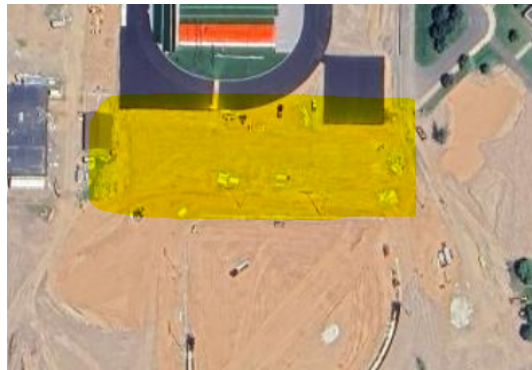


Amery MS Cross Country 9.23

Date: Tuesday, September 23rd
3:00 pm - Course Opens -
4:15 pm - Boys Race
4:45 pm - Girls Race

ALL TENTS MUST BE BETWEEN THE STADIUM AND THE BASEBALL FIELD!

Drop off and Parking on the next page



Teams: Amery, Baldwin-Woodville, Ellsworth, Osceola, Prescott, Saint Croix Central

Distance: 2500m

Entry Fee: \$100.00 Payable to Amery School District.
Please limit the number of competitors you enter to 60. Please send the double entry fee if over that number.

School District Amery
Attn: Jill Jackson
555 Minneapolis Ave, Amery WI 54001

Site: The Starting line is east of the Elementary School. See the map below.

Entry Process: Registration Link: <https://www.athletic.net/CrossCountry/meet/261255/register>
Entries close Sunday, September 21 at 12PM

Questions: Contact Dylan Johnson @ 715-554-4465

Awards: Ribbons will be given for Boys 1-14 and Girls 1-14. Competitors will get their award right after they finish the race. No separate awards ceremony for this event.

Drop Off / Map Next Page!



Amery MS Cross Country 9.23

Buses/Drop Off:

Please arrive prior to 3:05 pm or after 3:25 pm. With our new campus traffic patterns, we cannot have additional traffic from 3:05 – 3:25 pm. Please drop off students and tents at the blue circled area to enter the “tent city area”. Please park buses in the parking lot north of the MS (purple rectangle).

